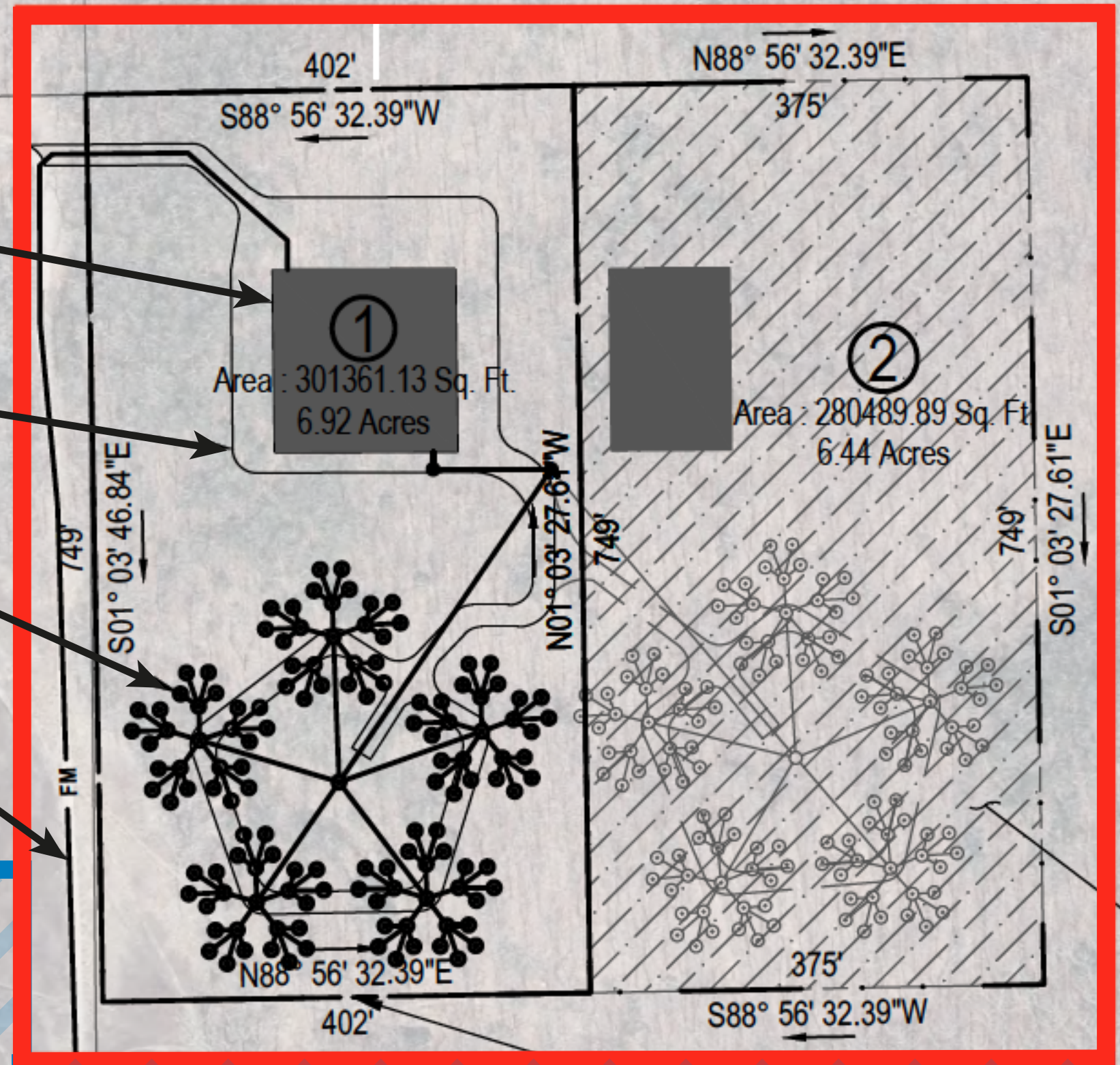


PHASE-1:

Proposed 300,000 square foot STP to accomodate Montauk downtown Hotels/Motels & Business needs.

- Proposed paved roadways
- Proposed leaching fields for 550,000 gallons per day design flow
- Proposed 8" sewer main routed along Montauk Highway (Rt 27)

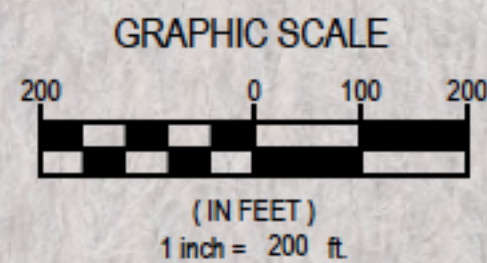


PHASE-3:

Possible STP Growth to accomodate Montauk Docks & Harbor areas?

PHASE-2:

Possible STP Growth to accomodate residential areas such as Ditch Plains?



Hither Woods Sewage Treatment Plant sites, showing PHASE-1 and possible locations for STP growth for PHASE-2 and PHASE-3. Phase 1 estimated cost is \$75 million.